



OPEN ACCESS

# The effects of tumour necrosis factor inhibitors, methotrexate, non-steroidal anti-inflammatory drugs and corticosteroids on cardiovascular events in rheumatoid arthritis, psoriasis and psoriatic arthritis: a systematic review and meta-analysis

Camille Roubille,<sup>1</sup> Vincent Richer,<sup>2</sup> Tara Starnino,<sup>3</sup> Collette McCourt,<sup>4</sup> Alexandra McFarlane,<sup>5</sup> Patrick Fleming,<sup>6</sup> Stephanie Siu,<sup>7</sup> John Kraft,<sup>8</sup> Charles Lynde,<sup>8</sup> Janet Pope,<sup>7</sup> Wayne Gulliver,<sup>9</sup> Stephanie Keeling,<sup>5</sup> Jan Dutz,<sup>4</sup> Louis Bessette,<sup>10</sup> Robert Bissonnette,<sup>11</sup> Boulos Haraoui<sup>12</sup>

**Handling editor** Tore K Kvien

► Additional material is published online only. To view please visit the journal online (<http://dx.doi.org/10.1136/annrheumdis-2014-206624>).

For numbered affiliations see end of article.

## Correspondence to

Boulos Haraoui, Institut de Rhumatologie de Montreal, 1551 Ontario Street East, Montreal, Quebec, Canada H2L 1S6; [boulos.haraoui@ssss.gouv.qc.ca](mailto:boulos.haraoui@ssss.gouv.qc.ca)

Received 15 September 2014  
Revised 15 December 2014  
Accepted 16 December 2014  
Published Online First  
5 January 2015



Open Access  
Scan to access more  
free content



CrossMark

**To cite:** Roubille C, Richer V, Starnino T, et al. *Ann Rheum Dis* 2015;**74**:480–489.

## ABSTRACT

The objective of this systematic literature review was to determine the association between cardiovascular events (CVEs) and antirheumatic drugs in rheumatoid arthritis (RA) and psoriatic arthritis (PsA)/psoriasis (Pso).

Systematic searches were performed of MEDLINE, EMBASE and Cochrane databases (1960 to December 2012) and proceedings from major relevant congresses (2010–2012) for controlled studies and randomised trials reporting confirmed CVEs in patients with RA or PsA/Pso treated with antirheumatic drugs. Random-effects meta-analyses were performed on extracted data.

Out of 2630 references screened, 34 studies were included: 28 in RA and 6 in PsA/Pso. In RA, a reduced risk of all CVEs was reported with tumour necrosis factor inhibitors (relative risk (RR), 0.70; 95% CI 0.54 to 0.90;  $p=0.005$ ) and methotrexate (RR, 0.72; 95% CI 0.57 to 0.91;  $p=0.007$ ). Non-steroidal anti-inflammatory drugs (NSAIDs) increased the risk of all CVEs (RR, 1.18; 95% CI 1.01 to 1.38;  $p=0.04$ ), which may have been specifically related to the effects of rofecoxib. Corticosteroids increased the risk of all CVEs (RR, 1.47; 95% CI 1.34 to 1.60;  $p<0.001$ ). In PsA/Pso, systemic therapy decreased the risk of all CVEs (RR, 0.75; 95% CI 0.63 to 0.91;  $p=0.003$ ).

In RA, tumour necrosis factor inhibitors and methotrexate are associated with a decreased risk of all CVEs while corticosteroids and NSAIDs are associated with an increased risk. Targeting inflammation with tumour necrosis factor inhibitors or methotrexate may have positive cardiovascular effects in RA. In PsA/Pso, limited evidence suggests that systemic therapies are associated with a decrease in all CVE risk.

## INTRODUCTION

Patients with rheumatoid arthritis (RA) have increased risk of cardiovascular morbidity and mortality.<sup>1,2</sup> Although less evidence has been published so far,<sup>3,4</sup> this increased risk is also suspected in patients with psoriasis (Pso), with or without psoriatic arthritis (PsA). Irrespective of classical cardiovascular risk factors, the systemic inflammation characteristic of RA and PsA/Pso plays a pivotal role in increasing cardiovascular risk by accelerating atherosclerosis.<sup>5</sup> Vascular inflammation and the

related elevated cardiovascular risk may affect all patients with RA, beginning in the early stage of disease (perhaps even preceding clinical onset)<sup>6</sup> and worsening with additional classical cardiovascular risk factors.

Many anti-inflammatory strategies have emerged as potential therapeutic approaches for atherosclerosis.<sup>7</sup> Likewise, treatment of the underlying inflammatory process could contribute to improved cardiovascular outcomes in patients with RA and PsA/Pso.<sup>8</sup> This is reflected in one of the current European League Against Rheumatism recommendations in RA,<sup>9,10</sup> which advises achieving remission or low disease activity as early as possible, not only for better structural and functional outcomes, but also to reduce cardiovascular risk. However, it is still open to discussion as to whether targeting systemic inflammation itself with disease-modifying antirheumatic drugs (DMARDs) reduces the occurrence of cardiovascular events (CVEs) in patients with RA or PsA/Pso.

The purpose of this systematic literature review and meta-analysis was to explore the association between the use of biologics (including tumour necrosis factor (TNF) inhibitors), non-biological DMARDs (including methotrexate), corticosteroids and non-steroidal anti-inflammatory drugs (NSAIDs), and CVEs in patients with RA or PsA/Pso.

## METHODS

A systematic literature review and meta-analysis were performed according to Preferred Reporting Items for Systematic reviews and Meta-Analyses statement.<sup>11</sup>

## Data sources and searches

A systematic literature search of MEDLINE (via PubMed), EMBASE and the Cochrane Library databases (1960 to December 2012) was performed to identify observational studies and randomised controlled trials that reported CVEs in adults with RA or PsA/Pso treated with biologics (including TNF inhibitors), non-biological DMARDs (including methotrexate), NSAIDs and corticosteroids (see online supplementary eMethods). Searches were restricted to English language. We also searched the

proceedings of the American College of Rheumatology, European League Against Rheumatism, American Academy of Dermatology and European Academy of Dermatology and Venereology annual meetings (2010–2012) and hand-searched reference lists for relevant additional studies.

### Study selection

Studies were included if they were observational studies or randomised controlled trials that reported relevant confirmed CVEs (including all CVEs, myocardial infarction, heart failure, stroke and/or major adverse cardiac events); included patients with RA or Pso/PsA treated with biologics, non-biological DMARDs, corticosteroids or NSAIDs (or phototherapy for Pso/PsA); and included a suitable control group (another treatment, such as a TNF inhibitor compared with methotrexate, or non-use of the investigative treatment, such as use of a TNF inhibitor compared with non-use of a TNF inhibitor). Studies were excluded if they only reported data on cardiovascular risk factors (eg, diabetes mellitus), intermediate endpoints (eg, lipid levels) or surrogate markers of atherosclerosis (eg, arterial intima media thickness); reported data on <400 patients; had a follow-up duration <1 year (to ensure that impact of the assessed treatment was most likely to be a true effect and not due to chance in a short duration of observation); included a patient population with a mean age of 80 years or older (to allow homogeneous cross-study populations, as the majority of studies included populations with a mean age of approximately 60 years); or did not have sufficient data to convert to relative risk (RR). Two studies that specifically included veteran patients with RA<sup>12 13</sup> were excluded because 90% of the study population comprised men, which is not representative of the classical gender stratification in RA.

One author (CR) screened all titles and abstracts for potential inclusion. Two authors (CR and BH) then independently screened the full text of the selected studies for inclusion in the systematic review and meta-analysis according to the predetermined criteria. Disagreements were resolved by consensus.

### Data extraction and quality assessment

Two investigators (CR and BH) independently extracted the following data for each study using a predefined data collection form: study design; data sources; sample size; age of the subjects; underlying disease (RA or Pso/PsA); duration of follow-up; treatments under investigation; cardiovascular outcomes of interest; number of outcomes and models of adjustment (age and gender, cardiovascular risk factors, history of cardiovascular disease, RA disease activity, and use of TNF inhibitors, methotrexate, corticosteroids or NSAIDs). HRs, ORs, RRs, rate ratios or mean effect sizes for each drug and comparator, together with their associated 95% CIs, were recorded for each endpoint. When only incident outcomes were reported, the numbers of events in the compared groups were extracted. We contacted authors for missing data when necessary. If studies reported data on several drugs and/or on several cardiovascular endpoints, each value was included in the analysis, so one reference could contribute several different data values to the final meta-analysis. When several models of adjustment were reported, the most adjusted estimates were used in the analysis. Selected studies were assessed for quality using the Newcastle-Ottawa Scale, designed to assess the quality of non-randomised studies such as cohort and case-control studies.<sup>14</sup> Briefly, this scale allocates points for appropriateness of

participant selection (0–4 points), comparability (0–2 points) and exposure or outcome (0–3 points).

### Data synthesis and statistical analysis

Extracted data were combined for meta-analysis using Review Manager (RevMan) software (Cochrane Collaboration). When only incident outcomes were reported, RRs were computed. If patient-years of follow-up were available, rate ratios were calculated and used in analysis. The resulting adjusted or unadjusted RRs, HRs and rate ratios were considered equivalent measures of effect size and entered into RevMan. ORs were transformed to RRs.<sup>15 16</sup> These measures were generically referred to as risk ratios. For all outcomes, random-effects meta-analyses were conducted. This assumes that different studies were estimating different intervention effects and partly explains the heterogeneity between studies. Forest plots were constructed to summarise the risk ratio estimates and their 95% CIs. These figures present measures of heterogeneity across studies (Cochrane Q statistic, noted as  $\chi^2$  and the  $I^2$  statistic) and a test for overall effect (Z). Funnel plots and Egger's regression test were also produced to help detect potential publication bias.

### Primary and secondary outcomes

The primary outcome was the association between treatment and all CVEs. The secondary outcomes were the association between treatment and myocardial infarction, heart failure, stroke or major adverse cardiac events.

## RESULTS

### Study selection

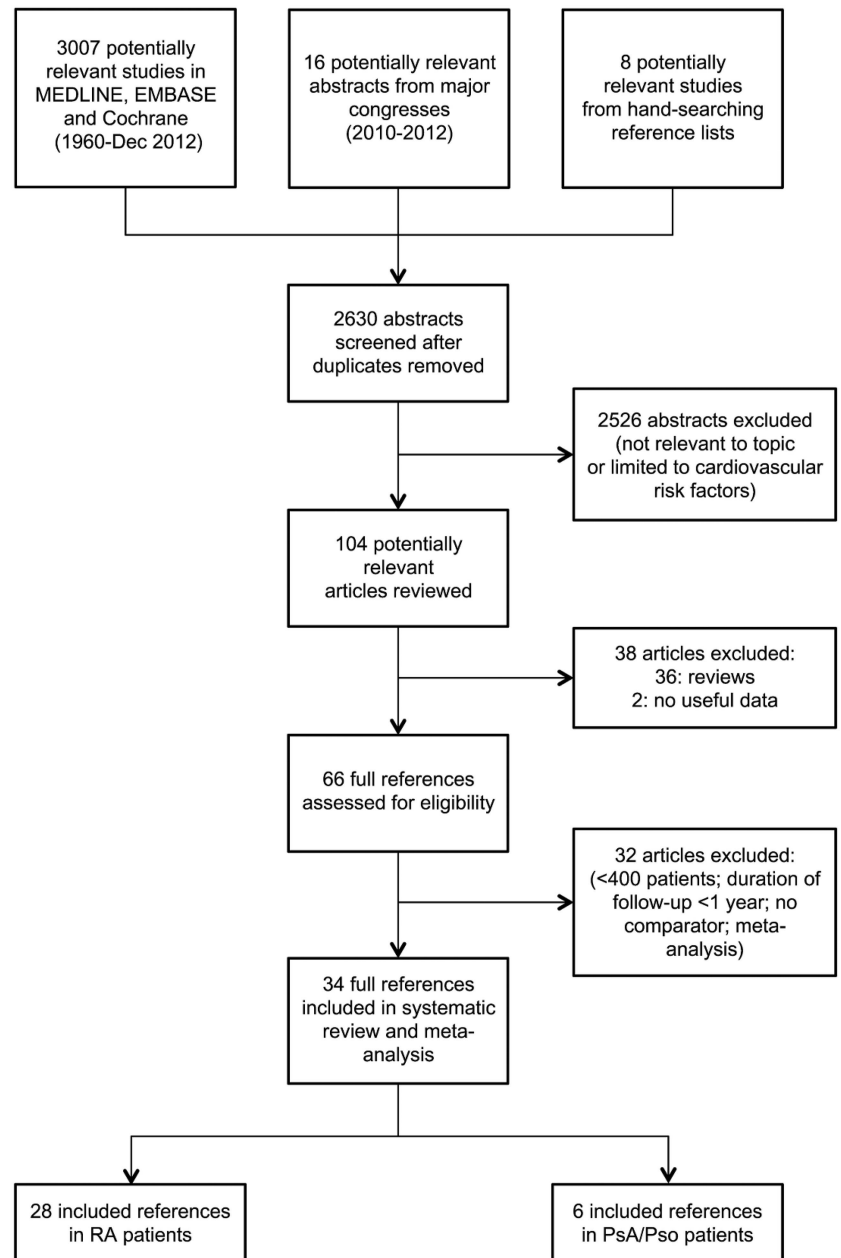
We identified 2630 unique references through searching databases, conference proceedings and reference lists (figure 1). Of these, 2526 were excluded as they were not relevant to our topic or related to cardiovascular risk factors or surrogate markers of atherosclerosis. Of the 104 remaining references, 66 were selected for full-text review. Finally, 34 references met the selection criteria for meta-analysis (see online supplementary table S1): 28 in RA (total of 236 525 subjects; 5410 CVEs)<sup>17–44</sup> and 6 in Pso/PsA (220 209 subjects; 2701 CVEs).<sup>12 45–49</sup>

### Cardiovascular outcomes in RA: results of meta-analyses

In RA, TNF inhibitors were significantly associated with a reduction in the risk of all CVEs (RR, 0.70; 95% CI 0.54 to 0.90;  $p=0.005$ ), as well as in myocardial infarctions, strokes and major adverse cardiac events (figure 2A). No significant effect on heart failure was observed (figure 2A). A beneficial association between methotrexate and reduction in the risk of all CVEs (RR, 0.72; 95% CI 0.57 to 0.91;  $p=0.007$ ) and myocardial infarction was also found (figure 2B). However, in contrast with TNF inhibitors, methotrexate was not associated with a significant decrease in the risk of strokes and major adverse cardiac events, although trends towards decreasing risk of heart failure were found (figure 2B). This may be due to the low number of events included in the meta-analysis, which did not provide sufficient statistical power to observe a differential effect.

NSAIDs increased the risk of all CVEs (RR, 1.18; 95% CI 1.01 to 1.38;  $p=0.04$ ) and strokes. This effect appears mostly driven by cyclooxygenase-2 (COX-2) inhibitors (RR, 1.36; 95% CI 1.10 to 1.67;  $p=0.004$ ) rather than non-selective NSAIDs (RR, 1.08; 95% CI 0.94 to 1.24;  $p=0.28$ ) (figure 2C). Of note, some studies assessing rofecoxib, which has already been withdrawn from the market, have been included. Hence, we

**Figure 1** Search and selection of studies for systematic review and meta-analysis. PsA, psoriatic arthritis; Pso, psoriasis; RA, rheumatoid arthritis.



performed separate meta-analyses for rofecoxib and celecoxib. While rofecoxib increased the risk of all CVEs (RR, 1.58; 95% CI 1.24 to 2.00;  $p < 0.001$ ), celecoxib did not (RR, 1.03; 95% CI 0.80 to 1.32;  $p = 0.81$ ) (see online supplementary figure S1). Additionally, NSAIDs did not demonstrate any significant effect on risk of myocardial infarction, heart failure or major adverse cardiac events (figure 2C); however, with few studies included, these findings should be interpreted with caution.

Corticosteroids were associated with an increased risk of all CVEs (RR, 1.47; 95% CI 1.34 to 1.60;  $p < 0.001$ ), as well as risk of myocardial infarction, stroke, heart failure and major adverse cardiac events (figure 2D).

In the meta-analyses evaluating TNF inhibitors or methotrexate, some heterogeneity was found between studies for all endpoints (except stroke). Heterogeneity was only observed for the all CVE endpoint in the meta-analyses evaluating all NSAIDs or COX-2 inhibitors. Of note, no significant heterogeneity was found for the all CVE endpoint in the meta-analyses evaluating

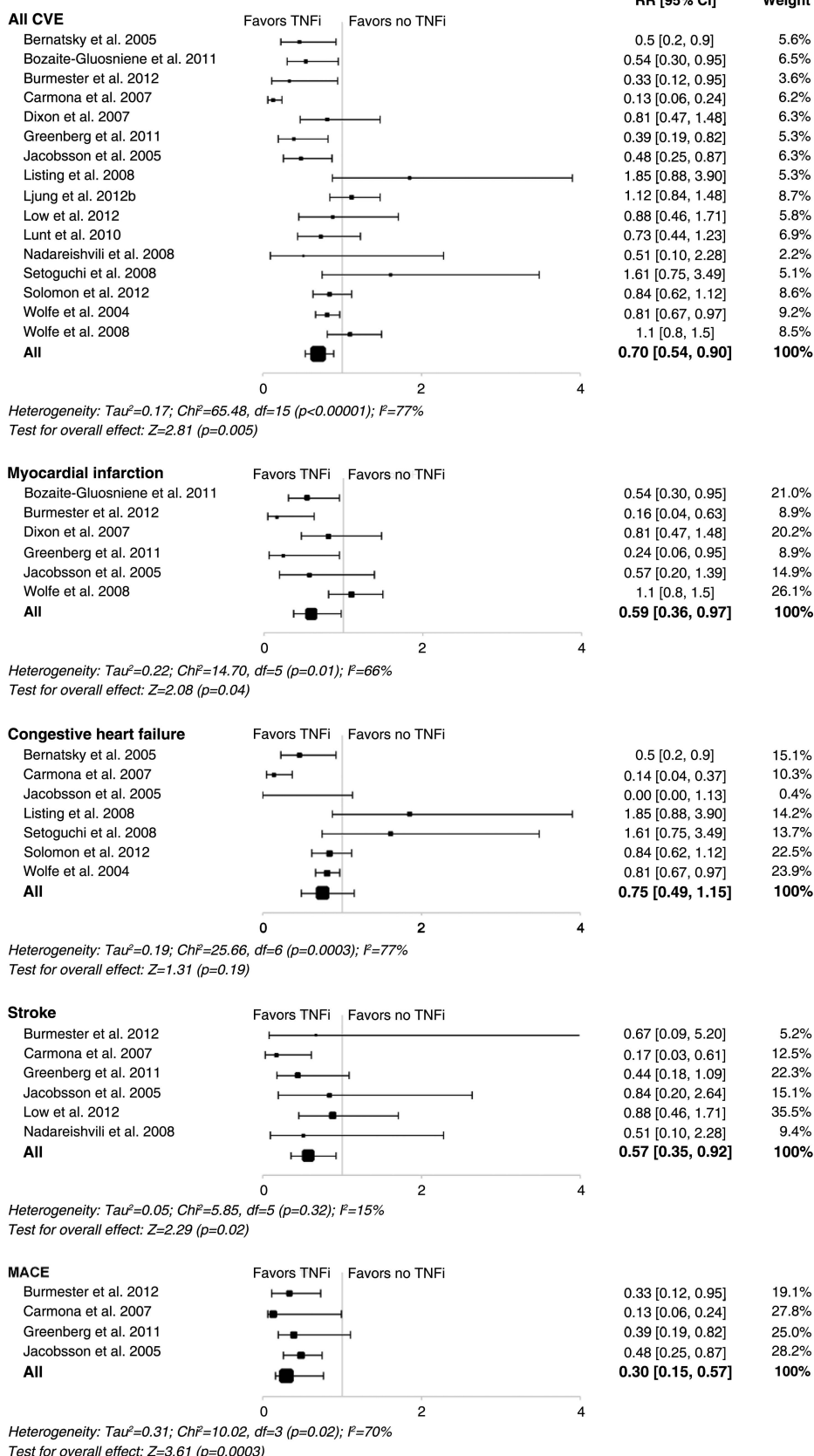
non-selective NSAIDs and corticosteroids or for any specific endpoint in the meta-analyses evaluating NSAIDs and corticosteroids. Analysis for publication bias was performed using funnel plots for all CVE endpoints (figure 3). Although subjective, visual inspection did not suggest publication bias for this outcome. Egger's asymmetry coefficient, known to be low powered, did detect potential bias in the meta-analysis of corticosteroid use ( $p = 0.02$ , figure 3) and COX-2 inhibitor use ( $p < 0.01$ ; see online supplementary figure S2).

#### Cardiovascular outcomes in Pso/PsA: results of meta-analyses

Only six studies met our selection criteria in patients with Pso and/or PsA; therefore, we only had sufficient data to evaluate the effect of systemic therapy compared with no systemic therapy or topical treatment on risk of all CVEs. Systemic therapy was associated with a significant decrease in risk of all CVEs in Pso/PsA (RR, 0.75; 95% CI 0.63 to 0.91;

**Figure 2** Meta-analyses of all cardiovascular events and individual cardiovascular events in patients with rheumatoid arthritis treated with (A) tumour necrosis factor inhibitors; (B) methotrexate; (C) non-steroidal anti-inflammatory drugs; or (D) corticosteroids in controlled studies. Size of data markers indicates relative weight of the study (from random-effects analysis). COX-2, cyclooxygenase-2; CVE, cardiovascular event; MACE, major adverse cardiac event; MTX, methotrexate; RR, relative risk; TNFi, tumour necrosis factor inhibitor.

### A Tumour necrosis factor inhibitors



$p=0.003$ ) (see online supplementary figure S3). No significant heterogeneity was observed (see online supplementary figure S4).

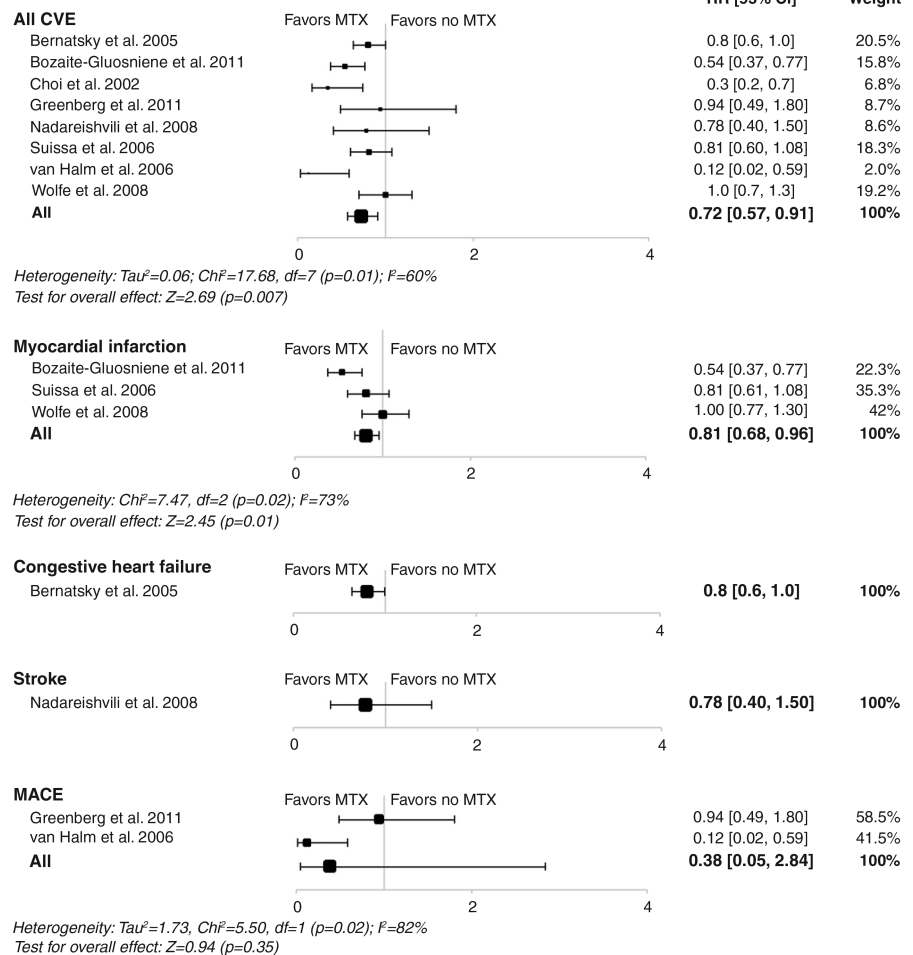
## DISCUSSION

To our knowledge, this is the first systematic literature review and meta-analysis of published controlled studies assessing the



Figure 2 Continued

## B Methotrexate



association between CVEs and use of TNF inhibitors, methotrexate, NSAIDs or corticosteroids in patients with RA or Pso/PsA.

In patients with RA, treatment with TNF inhibitors or methotrexate was associated with a 30% and 28% reduction in the risk of CVEs, respectively, while use of NSAIDs or corticosteroids was associated with 18% and 47% increase in risk of all CVEs, respectively. Moreover, while TNF inhibitors and methotrexate were also found to be associated with a reduction in risk of some specific cardiovascular endpoints, corticosteroids were associated with an increase in risk of all specific outcomes. In patients with Pso/PsA, data suggest that biologics and other DMARDs may be associated with a decreased risk of CVEs, but we acknowledge that evidence is less conclusive than in RA and that further studies are needed.

Compared with the general population, patients with RA have an increased risk of cardiovascular disease or events<sup>50</sup> and reduced survival.<sup>2</sup> Systemic inflammation is the cornerstone of both RA and atherosclerosis. However, whether effective DMARD-based therapy can ameliorate this increased risk in RA or Pso/PsA is still under debate. Considering these immunomodulatory strategies in atherosclerosis may also provide new perspective in managing cardiovascular disease in the general population. Indeed, in the (non-RA) primary cardiovascular disease prevention Justification for Use of statins in Prevention: an Intervention Trial Evaluating Rosuvastatin randomised controlled trial, the absolute risk of first major adverse cardiac events increased with increasing high-sensitivity C-reactive protein (CRP) levels, a measure of systemic inflammation.<sup>51 52</sup> This study clearly showed an association

between inflammation and cardiovascular risk in otherwise 'healthy' individuals. In RA, elevated baseline CRP has been associated with cardiovascular death, persisting after adjustment for classical cardiovascular risk factors, supporting a relevant link between systemic inflammation and risk of cardiovascular disease.<sup>5</sup> Hence, by controlling the systemic inflammation, TNF inhibitors and methotrexate may decrease cardiovascular risk. Our present findings in RA support this hypothesis.

Several previous publications have also suggested that TNF inhibitors have a beneficial impact on cardiovascular risk.<sup>53 54</sup> As suggested in a systematic literature review,<sup>55</sup> another meta-analysis reported that TNF inhibitors in RA may reduce the risk of all CVEs (pooled adjusted RR, 0.46; 95% CI 0.28 to 0.77), myocardial infarction (pooled adjusted RR, 0.81; 95% CI 0.68 to 0.96) and cerebrovascular accident (pooled adjusted RR, 0.69; 95% CI 0.53 to 0.89).<sup>15</sup> Our analyses included more studies than those previously reported and our results are consistent with these prior findings. Interestingly, we found no association between TNF inhibitors and risk of heart failure in RA. In the general population with heart failure, TNF- $\alpha$  levels are increased<sup>56</sup> and associated with severity of clinical signs and symptoms.<sup>57</sup> Experimental heart failure models have suggested that TNF inhibitors may improve ventricular dysfunction<sup>58</sup>; however, a large clinical trial assessing etanercept in the treatment of congestive heart failure showed no benefit<sup>59</sup> while another one found that high-dose infliximab worsened heart failure in patients with moderate-to-severe chronic heart failure.<sup>60</sup> Consequently, the presence of severe heart failure

Figure 2 Continued

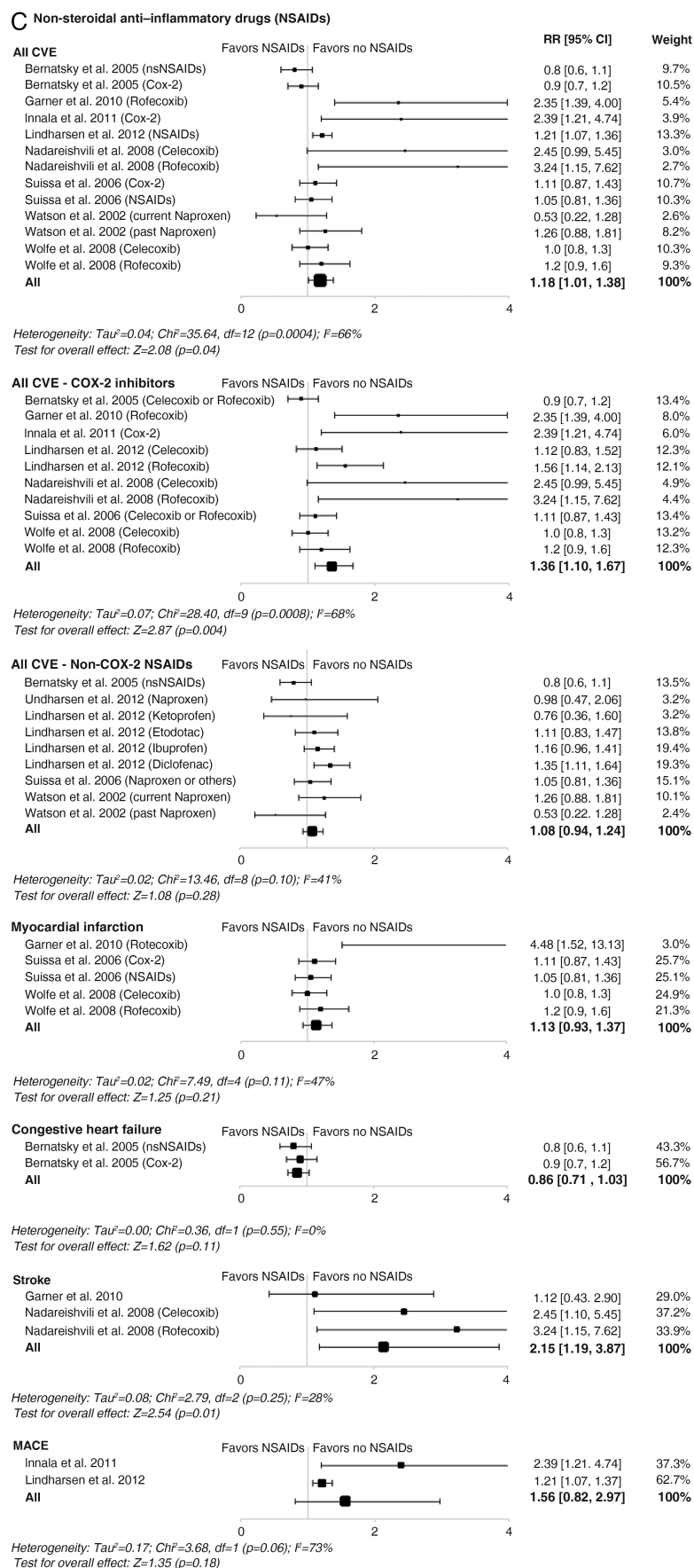
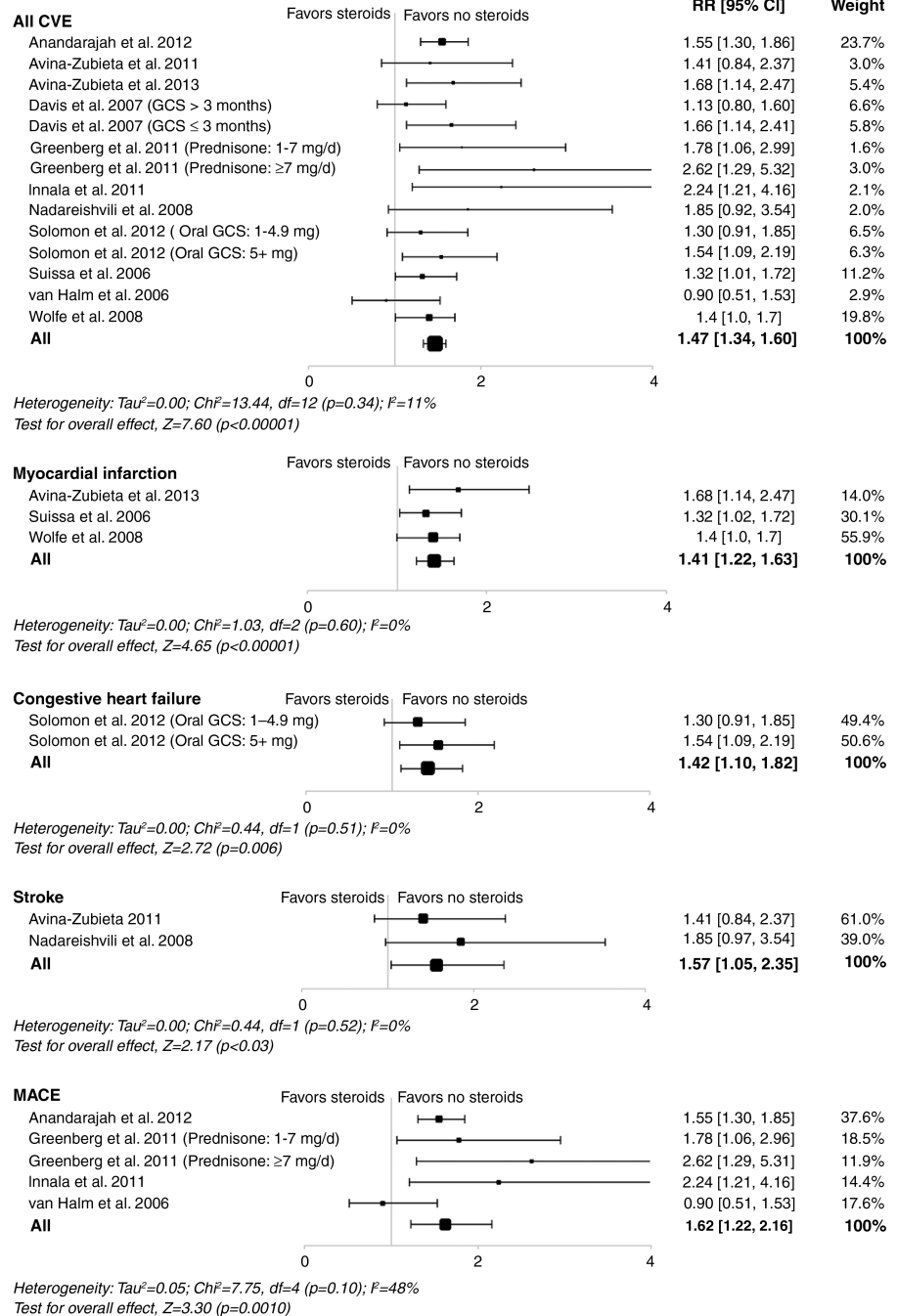


Figure 2 Continued

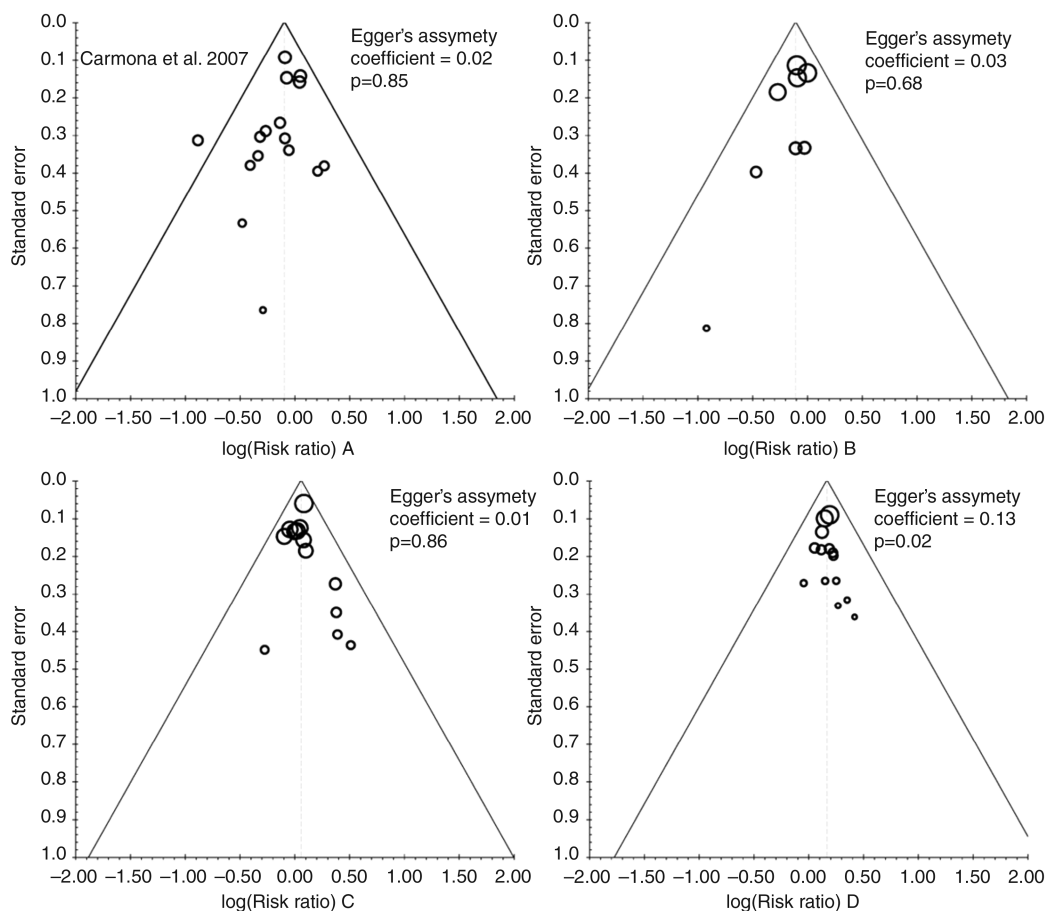
## D Corticosteroids



remains a contraindication to the use of TNF inhibitors in patients with RA. This may account for our results, given that the selected studies probably included patients with RA without pre-existing heart failure, consistent with a bias by indication. However, one recent study comparing 8656 new users of non-biological DMARDs with 11 587 new users of TNF inhibitors showed that TNF inhibitors were not associated with an increased risk of hospital admissions due to heart failure.<sup>37</sup> Further specifically designed trials assessing cardiovascular outcomes are needed to evaluate the use of TNF inhibitors in patients with RA, including those with heart failure.

In RA, methotrexate has recently been associated with a 70% reduction in mortality<sup>61</sup> and may also be associated with a reduced risk of cardiovascular disease.<sup>62</sup> Consistent with our results, methotrexate has been associated with a 21% lower risk

of total cardiovascular disease and an 18% lower risk of myocardial infarction in patients with chronic inflammatory diseases including RA.<sup>63</sup> Corticosteroids and NSAIDs are generally considered to have deleterious effects, although little evidence-based data are available in patients with RA. Both non-selective NSAIDs and COX-2 inhibitors have been demonstrated to increase cardiovascular risk<sup>64-66</sup>; however, few studies have evaluated the impact of corticosteroids and NSAIDs on CVEs specifically in RA.<sup>17-22 36 44</sup> Our meta-analysis in patients with RA revealed that COX-2 inhibitors were associated with an increased risk of all CVEs and strokes, mainly because of rofecoxib, which is now withdrawn from the market. Conversely, non-selective NSAIDs and celecoxib were not associated with increased risk of CVEs. The practical consequence of this finding may be to weigh the benefit-risk ratio of using NSAIDs



**Figure 3** Funnel plots for the meta-analysis of occurrence of cardiovascular events associated with treatment with (A) tumour necrosis factor inhibitors, (B) methotrexate, (C) non-steroidal anti-inflammatory drugs and (D) corticosteroids. The importance (weight) of each study is proportional to the marker size.

in patients with RA with higher cardiovascular risk, while not avoiding them at all costs.

The potential harmful cardiovascular effects of corticosteroids are well-known but not strongly evidence based.<sup>65</sup> To our knowledge, our meta-analysis is the first to report a deleterious association between corticosteroids and all CVEs, myocardial infarction, heart failure, stroke and major adverse cardiac events in the RA population. Corticosteroids may modulate the risk of cardiovascular disease in patients with RA in two competing directions: by increasing the risk due to deleterious effects on lipids, glucose tolerance, weight gain and hypertension,<sup>67</sup> but conversely potentially decreasing the risk by exerting anti-inflammatory and antiproliferative effects on vascular wall. Additionally, corticosteroids may result in two independent effects over time: an immediate effect of current exposure and a long-term cumulative effect of past exposure.<sup>22 68</sup> Notably, corticosteroid use has recently been associated with a dose-dependent increased mortality in RA.<sup>69</sup>

In PsA/Pso, less evidence on risk of CVEs has been published. However, the results of our meta-analysis are consistent with recent reviews,<sup>70 71</sup> underlining the need for adequately powered trials to assess the cardiovascular effects of systemic therapy including TNF inhibitors in patients with PsA/Pso.

Interpreting the evidence from observational studies requires caution as these can generate more bias than randomised controlled trials. Hence, only an association between medication use and CVEs can be determined. However, we were unable to find any adequately powered randomised controlled trial assessing the impact of RA therapy on risk of CVEs. Furthermore, the duration

of follow-up of most randomised controlled trials in patients with RA or PsA/Pso may not be long enough to investigate the effects of such treatments on CVE rates. Finally, our results are consistent with two large meta-analyses evaluating methotrexate and TNF inhibitors in RA.<sup>15 63</sup>

Despite the mounting published evidence of an increased cardiovascular risk in patients with RA, few studies have investigated DMARD-based therapeutic strategies to reduce this risk. Therefore, a low number of studies assessing the impact of methotrexate on specific cardiovascular endpoints were included in our analysis. Additionally, lack of sufficient data did not allow for subgroup analyses of dose effect for methotrexate and corticosteroids in RA, or of the influence of psoriasis severity on the impact of systemic therapy on CVE rates in patients with PsA/Pso. No study evaluating the impact of non-TNF inhibitor biologics was found, although several studies evaluating the vascular impact of rituximab (NCT00844714) and tocilizumab (NCT00844714 and NCT01752335) are ongoing in RA.

Another limitation in this analysis is the differences in the cardiovascular definitions and comparators across studies. To mitigate this, we used selection criteria that would provide as homogeneous as possible study populations to provide clinically relevant results.

## CONCLUSION

Our meta-analysis provides important insights into the effect of antirheumatic drugs on CVEs in RA by suggesting that TNF inhibitors and methotrexate decrease the risk of such events while NSAIDs and corticosteroids increase the risk in RA. In



PsA/Pso, limited evidence suggests that systemic therapies are associated with a decrease in the risk of all CVEs. While current evidence implies deleterious cardiovascular effects of corticosteroids and COX-2 inhibitors in RA, suppressing diverse mediators of inflammation with methotrexate and TNF inhibitors may have positive cardiovascular effects. Large, prospective, adequately controlled and powered studies are needed to explore the effects of such drugs on cardiovascular morbidity and mortality in the RA and PsA/Pso populations.

#### Author affiliations

<sup>1</sup>University of Montreal Hospital Research Center (CRCHUM), Notre-Dame Hospital, Montreal, Quebec, Canada

<sup>2</sup>Department of Medicine, Dermatology Service, St-Luc Hospital, Montreal, Quebec, Canada

<sup>3</sup>Sacré-Coeur Hospital of Montreal, University of Montreal, Montreal, Quebec, Canada

<sup>4</sup>Department of Dermatology and Skin Science, University of British Columbia, Vancouver, British Columbia, Canada

<sup>5</sup>Division of Rheumatology, University of Alberta, Edmonton, Alberta, Canada

<sup>6</sup>Division of Dermatology, University of Toronto, Toronto, Ontario, Canada

<sup>7</sup>Division of Rheumatology, Department of Medicine, Western University of Canada, St. Joseph's Health Care, London, Ontario, Canada

<sup>8</sup>Lynde Dermatology, Markham, Ontario, Canada

<sup>9</sup>Faculty of Medicine, Memorial University of Newfoundland, St. John's, Newfoundland, Canada

<sup>10</sup>Department of Medicine, Centre de Recherche du CHU de Québec, Laval University, Quebec City, Quebec, Canada

<sup>11</sup>Innovaderm Research, Montreal, Quebec, Canada

<sup>12</sup>Department of Medicine, Rheumatic Disease Unit, Centre Hospitalier de l'Université de Montréal (CHUM) and Institut de Rhumatologie de Montréal, Montreal, Quebec, Canada

**Acknowledgements** The authors would like to acknowledge Dr Fred Wolfe and Dr Lotta Ljung, who kindly answered the questions of the authors, Mr André Allard (librarian, Montreal, QC, Canada), who helped perform the systemic literature search, and Mr Louis Coupal (Saint-Lambert, QC, Canada), who helped perform the statistical analysis. CR received a bursary from the Foundation of the University of Montreal Hospital Center (CHUM) for her fellowship. CM was the recipient of a Janssen Ortho Canada fellowship and a Geoffrey Dowling fellowship from the British Association of Dermatologists.

**Contributors** All authors are responsible for the work described in this paper. All authors were involved in at least one of the following: conception, design, acquisition, analysis, statistical analysis and interpretation of data. All authors were involved in drafting the manuscript and/or reviewing the manuscript for important intellectual content. All authors provided final approval of the version to be published.

**Funding** This publication summarises the results of the Canadian Dermatology-Rheumatology (DR) Co-morbidity Initiative systematic literature searches (MEDLINE, EMBASE, Cochrane Library, 2010-2012 ACR, EULAR, AAD, EADV abstracts) and consensus-based recommendations from a meeting on the management of comorbidities, held in Toronto, Canada, on 31 May to 1 June 2013, which was sponsored by AbbVie. AbbVie provided funding to Pinnacle Marketing & Education Inc., 7 Daoust, Hudson, Quebec, Canada, to manage the Canadian DR Co-morbidity Initiative that led to this paper. AbbVie paid consultancy fees to BH, JP, LB, SK, RB, WG, JD, CL and JK for their participation in the Canadian DR Co-morbidity Initiative. Travel to and from the meeting was reimbursed. AbbVie provided suggestions for topic ideas for the Canadian DR Co-morbidity Initiative and proposed authors for this paper. AbbVie attended the meeting but was not involved in the development of the paper. AbbVie did have the opportunity to review the final version of the publication. This publication reflects the opinions of the authors. CR prepared a draft outline for coauthors' comment and approval. Each author reviewed the publication at all stages of development to ensure that it accurately reflects the results of their literature searches and the consensus-based recommendations from the meeting experts. The authors determined final content, and all authors read and approved the final publication. The authors maintained complete control over the content of the paper. No payments were made to the authors for the writing of this publication. Juliette Allport of Leading Edge (part of the Lucid Group), Burleighfield House, Buckinghamshire, UK, subsequently supported incorporation of comments into final drafts for author approval, and editorial styling required by the journal. AbbVie paid Leading Edge for this work.

**Competing interests** AM owns stock in Pfizer. JK has acted as consultant, advisor and/or speaker for AbbVie, Amgen, Janssen, Leo Pharma and Novartis. CL has acted as a principal investigator, speaker and/or consultant for AbbVie, Amgen, Celgene, Eli Lilly, Galderma, Janssen, Leo Pharma, Merck, Novartis, Pfizer and

Valeant. JP has received research grants and/or has been a consultant for AbbVie, Actelion, Amgen, Bristol-Myers Squibb, Celgene, Janssen, Pfizer, Roche and UCB. SK has received unrestricted educational grants and consultancy fees from AbbVie, Amgen, AstraZeneca, Janssen, Roche and UCB. JD has received honoraria for participation in advisory boards and as a speaker for AbbVie, Amgen, Janssen and Leo Pharma. LB has received consulting fees, research grants, and honoraria for participation as a speaker for AbbVie, Amgen, Bristol-Myers Squibb, Janssen, Pfizer, Roche and UCB. RB has received honoraria for participation in advisory boards and/or research grants from AbbVie, Amgen, Celgene, Eli-Lilly Galderma, Incyte, Janssen, Leo Pharma, Merck, Novartis, Pfizer and Tribute. BH has received honoraria for participation in advisory boards and/or research grants from AbbVie, Amgen, Bio-K and Janssen and for participation in speaker engagements and consultative meetings for AbbVie, Actelion, Amgen, Janssen, Leo Pharma, Novartis and Roche.

**Provenance and peer review** Not commissioned; externally peer reviewed.

**Open Access** This is an Open Access article distributed in accordance with the Creative Commons Attribution Non Commercial (CC BY-NC 4.0) license, which permits others to distribute, remix, adapt, build upon this work non-commercially, and license their derivative works on different terms, provided the original work is properly cited and the use is non-commercial. See: <http://creativecommons.org/licenses/by-nc/4.0/>

#### REFERENCES

- Nicola PJ, Maradit-Kremers H, Roger VL, *et al.* The risk of congestive heart failure in rheumatoid arthritis: a population-based study over 46 years. *Arthritis Rheum* 2005;52:412–20.
- Solomon DH, Karlson EW, Rimm EB, *et al.* Cardiovascular morbidity and mortality in women diagnosed with rheumatoid arthritis. *Circulation* 2003;107:1303–7.
- Coumbe AG, Pritzker MR, Duprez DA. Cardiovascular risk and psoriasis: beyond the traditional risk factors. *Am J Med* 2014;127:12–18.
- Dowlatabadi EA, Kavousi M, Nijsten T, *et al.* Psoriasis is not associated with atherosclerosis and incident cardiovascular events: the Rotterdam Study. *J Invest Dermatol* 2013;133:2347–54.
- Goodson NJ, Symmons DP, Scott DG, *et al.* Baseline levels of C-reactive protein and prediction of death from cardiovascular disease in patients with inflammatory polyarthritis: a ten-year followup study of a primary care-based inception cohort. *Arthritis Rheum* 2005;52:2293–9.
- Kerola AM, Kerola T, Kauppi MJ, *et al.* Cardiovascular comorbidities antedating the diagnosis of rheumatoid arthritis. *Ann Rheum Dis* 2013;72:1826–9.
- Roubille F, Kritikou EA, Roubille C, *et al.* Emerging anti-inflammatory therapies for atherosclerosis. *Curr Pharm Des* 2013;19:5840–9.
- Roubille C, Haraoui B. Important issues at heart: cardiovascular risk management in rheumatoid arthritis. *Ther Adv Musculoskelet Dis* 2013;5:163–5.
- Smolen JS, Landewe R, Breedveld FC, *et al.* EULAR recommendations for the management of rheumatoid arthritis with synthetic and biological disease-modifying antirheumatic drugs. *Ann Rheum Dis* 2010;69:964–75.
- Peters MJ, Symmons DP, McCarey D, *et al.* EULAR evidence-based recommendations for cardiovascular risk management in patients with rheumatoid arthritis and other forms of inflammatory arthritis. *Ann Rheum Dis* 2010;69:325–31.
- Moher D, Liberati A, Tetzlaff J, *et al.* Preferred reporting items for systematic reviews and meta-analyses: the PRISMA statement. *Ann Intern Med* 2009;151:264–9, W64.
- Prodanovich S, Ma F, Taylor JR, *et al.* Methotrexate reduces incidence of vascular diseases in veterans with psoriasis or rheumatoid arthritis. *J Am Acad Dermatol* 2005;52:262–7.
- Al-Aly Z, Pan H, Zeringue A, *et al.* Tumor necrosis factor-alpha blockade, cardiovascular outcomes, and survival in rheumatoid arthritis. *Transl Res* 2011;157:10–18.
- Abou-Setta AM, Beaupre LA, Rashid S, *et al.* Comparative effectiveness of pain management interventions for hip fracture: a systematic review. *Ann Intern Med* 2011;155:234–45.
- Barnabe C, Martin BJ, Ghali WA. Systematic review and meta-analysis: anti-tumor necrosis factor alpha therapy and cardiovascular events in rheumatoid arthritis. *Arthritis Care Res (Hoboken)* 2011;63:522–9.
- Zhang J, Yu KF. What's the relative risk? A method of correcting the odds ratio in cohort studies of common outcomes. *JAMA* 1998;280:1690–1.
- Nadareishvili Z, Michaud K, Hallenbeck JM, *et al.* Cardiovascular, rheumatologic, and pharmacologic predictors of stroke in patients with rheumatoid arthritis: a nested, case-control study. *Arthritis Rheum* 2008;59:1090–6.
- Watson DJ, Rhodes T, Cai B, *et al.* Lower risk of thromboembolic cardiovascular events with naproxen among patients with rheumatoid arthritis. *Arch Intern Med* 2002;162:1105–10.
- Suissa S, Bernatsky S, Hudson M. Antirheumatic drug use and the risk of acute myocardial infarction. *Arthritis Rheum* 2006;55:531–6.

- 20 Davis JM III, Maradit Kremers H, Crowson CS, *et al.* Glucocorticoids and cardiovascular events in rheumatoid arthritis: a population-based cohort study. *Arthritis Rheum* 2007;56:820–30.
- 21 Avina-Zubieta JA, Abrahamowicz M, Choi HK, *et al.* Risk of cerebrovascular disease associated with the use of glucocorticoids in patients with incident rheumatoid arthritis: a population-based study. *Ann Rheum Dis* 2011;70:990–5.
- 22 Avina-Zubieta JA, Abrahamowicz M, De Vera MA, *et al.* Immediate and past cumulative effects of oral glucocorticoids on the risk of acute myocardial infarction in rheumatoid arthritis: a population-based study. *Rheumatology (Oxford)* 2013;52:68–75.
- 23 Bernatsky S, Hudson M, Suissa S. Anti-rheumatic drug use and risk of hospitalization for congestive heart failure in rheumatoid arthritis. *Rheumatology (Oxford)* 2005;44:677–80.
- 24 Carmona L, Descalzo MA, Perez-Pampin E, *et al.* All-cause and cause-specific mortality in rheumatoid arthritis are not greater than expected when treated with tumour necrosis factor antagonists. *Ann Rheum Dis* 2007;66:880–5.
- 25 Dixon WG, Watson KD, Lunt M, *et al.* Reduction in the incidence of myocardial infarction in patients with rheumatoid arthritis who respond to anti-tumor necrosis factor alpha therapy: results from the British Society for Rheumatology Biologics Register. *Arthritis Rheum* 2007;56:2905–12.
- 26 Choi HK, Hernan MA, Seeger JD, *et al.* Methotrexate and mortality in patients with rheumatoid arthritis: a prospective study. *Lancet* 2002;359:1173–7.
- 27 Garner SE, Fidan DD, Frankish RR, *et al.* Rofecoxib for rheumatoid arthritis. *Cochrane Database Syst Rev* 2005;CD003685.
- 28 Greenberg JD, Kremer JM, Curtis JR, *et al.* Tumour necrosis factor antagonist use and associated risk reduction of cardiovascular events among patients with rheumatoid arthritis. *Ann Rheum Dis* 2011;70:576–82.
- 29 Innala L, Moller B, Ljung L, *et al.* Cardiovascular events in early RA are a result of inflammatory burden and traditional risk factors: a five year prospective study. *Arthritis Res Ther* 2011;13:R131.
- 30 Jacobsson LT, Turesson C, Gulfe A, *et al.* Treatment with tumor necrosis factor blockers is associated with a lower incidence of first cardiovascular events in patients with rheumatoid arthritis. *J Rheumatol* 2005;32:1213–18.
- 31 Listing J, Strangfeld A, Kekow J, *et al.* Does tumor necrosis factor alpha inhibition promote or prevent heart failure in patients with rheumatoid arthritis? *Arthritis Rheum* 2008;58:667–77.
- 32 Lunt M, Watson KD, Dixon WG, *et al.* No evidence of association between anti-tumor necrosis factor treatment and mortality in patients with rheumatoid arthritis: results from the British Society for Rheumatology Biologics Register. *Arthritis Rheum* 2010;62:3145–53.
- 33 Setoguchi S, Schneeweiss S, Avorn J, *et al.* Tumor necrosis factor-alpha antagonist use and heart failure in elderly patients with rheumatoid arthritis. *Am Heart J* 2008;156:336–41.
- 34 van Halm VP, Nurmohamed MT, Twisk JW, *et al.* Disease-modifying antirheumatic drugs are associated with a reduced risk for cardiovascular disease in patients with rheumatoid arthritis: a case control study. *Arthritis Res Ther* 2006;8:R151.
- 35 Wolfe F, Michaud K. Heart failure in rheumatoid arthritis: rates, predictors, and the effect of anti-tumor necrosis factor therapy. *Am J Med* 2004;116:305–11.
- 36 Wolfe F, Michaud K. The risk of myocardial infarction and pharmacologic and nonpharmacologic myocardial infarction predictors in rheumatoid arthritis: a cohort and nested case-control analysis. *Arthritis Rheum* 2008;58:2612–21.
- 37 Solomon DH, Rassen JA, Kuriya B, *et al.* Heart failure risk among patients with rheumatoid arthritis starting a TNF antagonist. *Ann Rheum Dis* 2013;72:1813–18.
- 38 Low AS, Lunt M, Mercer LK, *et al.* Association between anti-tumor necrosis factor therapy and the risk of ischemic stroke in subjects with rheumatoid arthritis. Results from the British Society For Rheumatology Biologics Registers-Rheumatoid Arthritis (BSRBR-RA). [abstract]. *Arthritis Rheum* 2012;64:828.
- 39 Anandarajah AP, Saunders KC, Reed GW, *et al.* Major adverse cardiovascular events are more common in rheumatoid arthritis than in psoriatic arthritis and are associated with different risk factors. [abstract]. *Arthritis Rheum* 2012;64:2221.
- 40 Bozait-Gluosniene R, Tang X, Kirchner HL, *et al.* Reduced cardiovascular risk with use of methotrexate and tumor necrosis factor-inhibitors in patients with rheumatoid arthritis. [abstract]. *Arthritis Rheum* 2011;63:719.
- 41 Biki A, Tang X, Kirchner HL, *et al.* Prolonged hydroxychloroquine use is associated with decreased incidence of cardiovascular disease in rheumatoid arthritis patients. [abstract]. *Arthritis Rheum* 2011;63:1168.
- 42 Burmester G, Emery P, Signorovitch J, *et al.* The effects of adalimumab on risk of major adverse cardiovascular events in rheumatoid arthritis: a meta-analysis of randomized trials. [abstract]. *Ann Rheum Dis* 2012;71:359.
- 43 Ljung L, Rantapää-Dahlqvist S, Askling J, *et al.* The risk of acute coronary syndromes in RA in relation to TNF inhibitors and risks in the general population: a national cohort study. [abstract]. *Ann Rheum Dis* 2012;71:518.
- 44 Lindhardsen J, Gislason GH, Jacobsen S, *et al.* Non-steroidal anti-inflammatory drugs and risk of cardiovascular disease in patients with rheumatoid arthritis: a nationwide cohort study. *Ann Rheum Dis* 2014;73:1515–21.
- 45 Abuabara K, Lee H, Kimball AB. The effect of systemic psoriasis therapies on the incidence of myocardial infarction: a cohort study. *Br J Dermatol* 2011;165:1066–73.
- 46 Ahlehoj O, Skov L, Gislason G, *et al.* Cardiovascular disease event rates in patients with severe psoriasis treated with systemic anti-inflammatory drugs: a Danish real-world cohort study. *J Intern Med* 2013;273:197–204.
- 47 Chen YJ, Chang YT, Shen JL, *et al.* Association between systemic antipsoriatic drugs and cardiovascular risk in patients with psoriasis with or without psoriatic arthritis: a nationwide cohort study. *Arthritis Rheum* 2012;64:1879–87.
- 48 Lan CC, Ko YC, Yu HS, *et al.* Methotrexate reduces the occurrence of cerebrovascular events among Taiwanese psoriatic patients: a nationwide population-based study. *Acta Derm Venereol* 2012;92:349–52.
- 49 Wu JJ, Poon KY, Channul JC, *et al.* Association between tumor necrosis factor inhibitor therapy and myocardial infarction risk in patients with psoriasis. *Arch Dermatol* 2012;148:1244–50.
- 50 Avina-Zubieta JA, Thomas J, Sadatsafavi M, *et al.* Risk of incident cardiovascular events in patients with rheumatoid arthritis: a meta-analysis of observational studies. *Ann Rheum Dis* 2012;71:1524–9.
- 51 Ridker PM, Danielson E, Fonseca FA, *et al.* Rosuvastatin to prevent vascular events in men and women with elevated C-reactive protein. *N Engl J Med* 2008;359:2195–207.
- 52 Ridker PM, MacFadyen J, Libby P, *et al.* Relation of baseline high-sensitivity C-reactive protein level to cardiovascular outcomes with rosuvastatin in the Justification for Use of statins in Prevention: an Intervention Trial Evaluating Rosuvastatin (JUPITER). *Am J Cardiol* 2010;106:204–9.
- 53 Maki-Petaja KM, Elkhawad M, Cheryan J, *et al.* Anti-tumor necrosis factor-alpha therapy reduces aortic inflammation and stiffness in patients with rheumatoid arthritis. *Circulation* 2012;126:2473–80.
- 54 Solomon DH, Curtis JR, Saag KG, *et al.* Cardiovascular risk in rheumatoid arthritis: comparing TNF-alpha blockade with nonbiologic DMARDs. *Am J Med* 2013;126:730.e9–e17.
- 55 Westlake SL, Colebatch AN, Baird J, *et al.* Tumour necrosis factor antagonists and the risk of cardiovascular disease in patients with rheumatoid arthritis: a systematic literature review. *Rheumatology (Oxford)* 2011;50:518–31.
- 56 Levine B, Kalman J, Mayer L, *et al.* Elevated circulating levels of tumor necrosis factor in severe chronic heart failure. *N Engl J Med* 1990;323:236–41.
- 57 McMurray J, Abdullah I, Dargie HJ, *et al.* Increased concentrations of tumour necrosis factor in “cachectic” patients with severe chronic heart failure. *Br Heart J* 1991;66:356–8.
- 58 Kadokami T, Frye C, Lemster B, *et al.* Anti-tumor necrosis factor-alpha antibody limits heart failure in a transgenic model. *Circulation* 2001;104:1094–7.
- 59 Mann DL, McMurray JJ, Packer M, *et al.* Targeted anticytokine therapy in patients with chronic heart failure: results of the Randomized Etanercept Worldwide Evaluation (RENEWAL). *Circulation* 2004;109:1594–602.
- 60 Chung ES, Packer M, Lo KH, *et al.* Randomized, double-blind, placebo-controlled, pilot trial of infliximab, a chimeric monoclonal antibody to tumor necrosis factor-alpha, in patients with moderate-to-severe heart failure: results of the anti-TNF Therapy Against Congestive Heart Failure (ATTACH) trial. *Circulation* 2003;107:3133–40.
- 61 Wasko MC, Dasgupta A, Hubert H, *et al.* Propensity-adjusted association of methotrexate with overall survival in rheumatoid arthritis. *Arthritis Rheum* 2013;65:334–42.
- 62 Westlake SL, Colebatch AN, Baird J, *et al.* The effect of methotrexate on cardiovascular disease in patients with rheumatoid arthritis: a systematic literature review. *Rheumatology (Oxford)* 2010;49:295–307.
- 63 Micha R, Imamura F, Wyler von Ballmoos M, *et al.* Systematic review and meta-analysis of methotrexate use and risk of cardiovascular disease. *Am J Cardiol* 2011;108:1362–70.
- 64 Trelle S, Reichenbach S, Wandel S, *et al.* Cardiovascular safety of non-steroidal anti-inflammatory drugs: network meta-analysis. *BMJ* 2011;342:c7086.
- 65 Roubille C, Martel-Pelletier J, Davy JM, *et al.* Cardiovascular adverse effects of anti-inflammatory drugs. *Antiinflamm Antiallergy Agents Med Chem* 2013;12:55–67.
- 66 Coxib and traditional NSAID Trialists’ (CNT) Collaboration Bhala N, Emberson J, Merhi A, *et al.* Vascular and upper gastrointestinal effects of non-steroidal anti-inflammatory drugs: meta-analyses of individual participant data from randomised trials. *Lancet* 2013;382:769–79.
- 67 Panoulas VF, Douglas KM, Stavropoulos-Kalinoglou A, *et al.* Long-term exposure to medium-dose glucocorticoid therapy associates with hypertension in patients with rheumatoid arthritis. *Rheumatology (Oxford)* 2008;47:72–5.
- 68 Wei L, MacDonald TM, Walker BR. Taking glucocorticoids by prescription is associated with subsequent cardiovascular disease. *Ann Intern Med* 2004;141:764–70.
- 69 del Rincon I, Battafarano DF, Restrepo JF, *et al.* Glucocorticoid dose thresholds associated with all-cause and cardiovascular mortality in rheumatoid arthritis. *Arthritis Rheumatol* 2014;66:264–72.
- 70 Hugh J, Van Voorhees AS, Nijhawan RI, *et al.* From the Medical Board of the National Psoriasis Foundation: The risk of cardiovascular disease in individuals with psoriasis and the potential impact of current therapies. *J Am Acad Dermatol* 2014;70:168–77.
- 71 Armstrong AW, Brezinski EA, Follansbee MR, *et al.* Effects of biologic agents and other Disease-Modifying Antirheumatic Drugs on cardiovascular outcomes in psoriasis and psoriatic arthritis: a systematic review. *Curr Pharm Des* 2014;20:500–12.