

Supplementary Figures

Figure S1. DAPSA distribution of 30 patients selected for survey. Each red dot represents one patient; x-axis displays DAPSA values.

Figure S1.

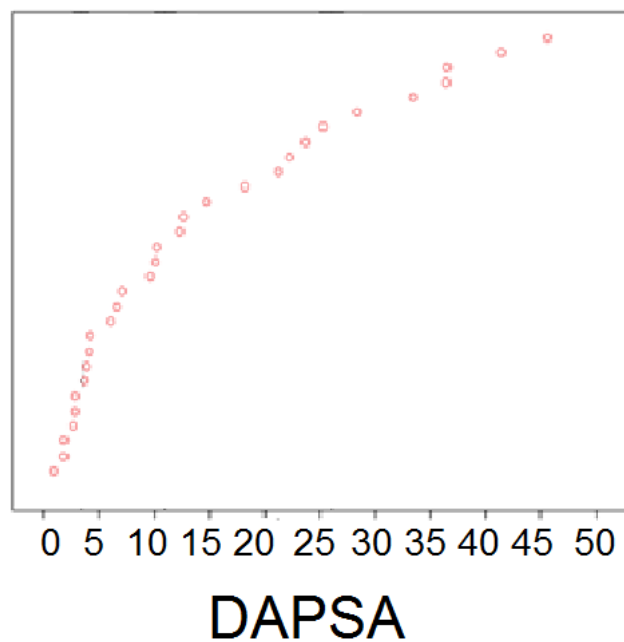
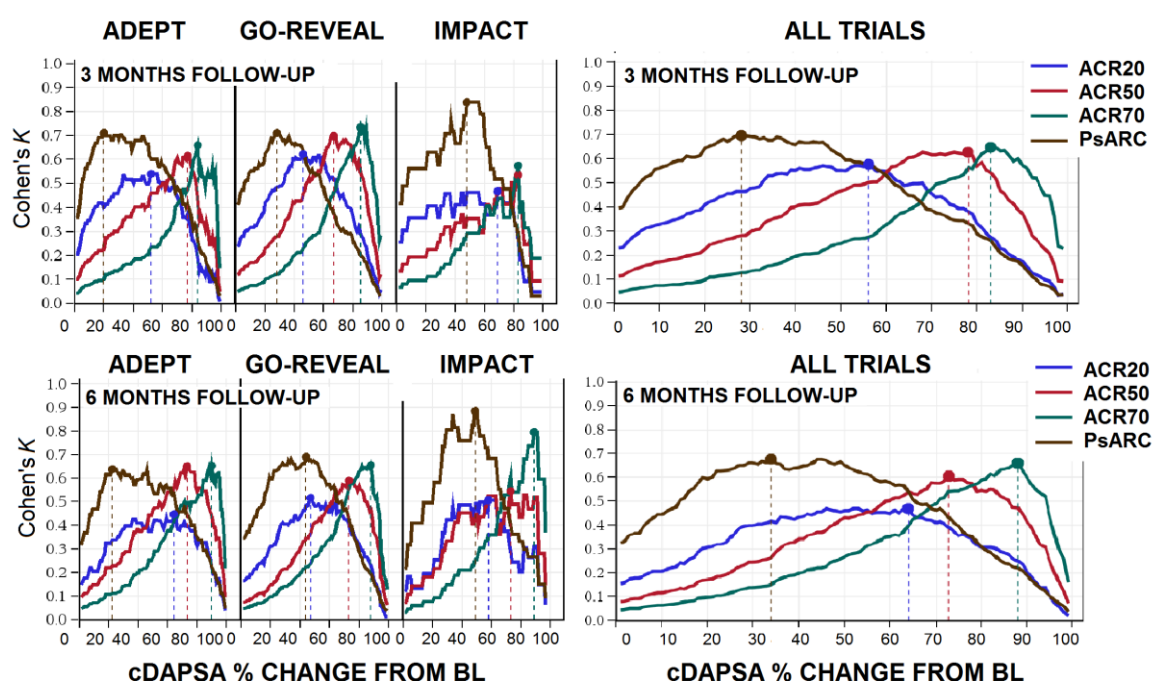


Figure S2. Definition of response levels for the clinical DAPSA (cDAPSA); Cohen's Kappa analysis. Agreement of cDAPSA percent change (x-axis) with ACR 20% (blue lines), ACR 50% (red lines), ACR 70% (green lines) and PsARC (brown lines) Upper panels show response after 3 months, lower panels: response after 6 months. Left panels display analyses of separate trials: ADEPT, GO-REVEAL and IMPACT. Right panels show pooled results of all treatment groups in three trials (N=425). Placebo groups were excluded in all analyses. X-axis: relative change of cDAPSA from baseline in percent; y-axis: Cohen's Kappa in comparison with the respective comparator. The table specifies the respective peak agreement between percent cDAPSA change from baseline (% change) on the one hand, and ACR20/50/70, or PsARC on the other; κ =Cohen's Kappa; BL=baseline. (Addendum to Figure 2 in main manuscript)

Figure S2.



		ADEPT; N=127		GO-REVEAL; N=255		IMPACT; N=43		All trials; N=425	
		% change	K	% change	K	% change	K	% change	K
3 MONTHS	ACR20	52.0	0.54	46.0	0.62	69.0	0.47	56.0	0.58
	ACR50	77.0	0.62	67.0	0.70	83.0	0.53	78.0	0.63
	ACR70	84.0	0.66	85.0	0.73	83.0	0.57	83.0	0.65
	PsARC	20.0	0.71	28.0	0.71	48.0	0.84	28.0	0.70
6 MONTHS	ACR20	64.0	0.45	47.0	0.52	58.0	0.50	64.0	0.47
	ACR50	73.0	0.65	73.0	0.59	73.0	0.54	73.0	0.60
	ACR70	90.0	0.65	88.0	0.65	89.0	0.79	88.0	0.66
	PsARC	22.0	0.64	44.0	0.69	49.0	0.88	34.0	0.68

Figure S3. Discriminant validity of cutpoints in Chi-square analysis: separate analyses of ADEPT, IMPACT and GO-REVEAL. (Addendum to *Figure 4* in main manuscript). Chi-square tests for each DAPSA cutpoint as a measure of strength of discrimination between response in treatment and placebo arms. X-axis displays DAPSA percent change from baseline. Panels show analyses of ADEPT (upper panels), IMPACT (middle) and GO-REVEAL (lower panels). Y-axis indicates p values of Chi-square analyses. Vertical lines indicate newly established cutpoints at DAPSA thresholds of 50/75/85 percent change from baseline: results of Chi-square tests for the derived thresholds for a DAPSA change of 50%, 75%, and 85% after 3 months, and after 6 months are specified (green numbers); y-axis shows corresponding p-values; BL=baseline.

Figure S3.

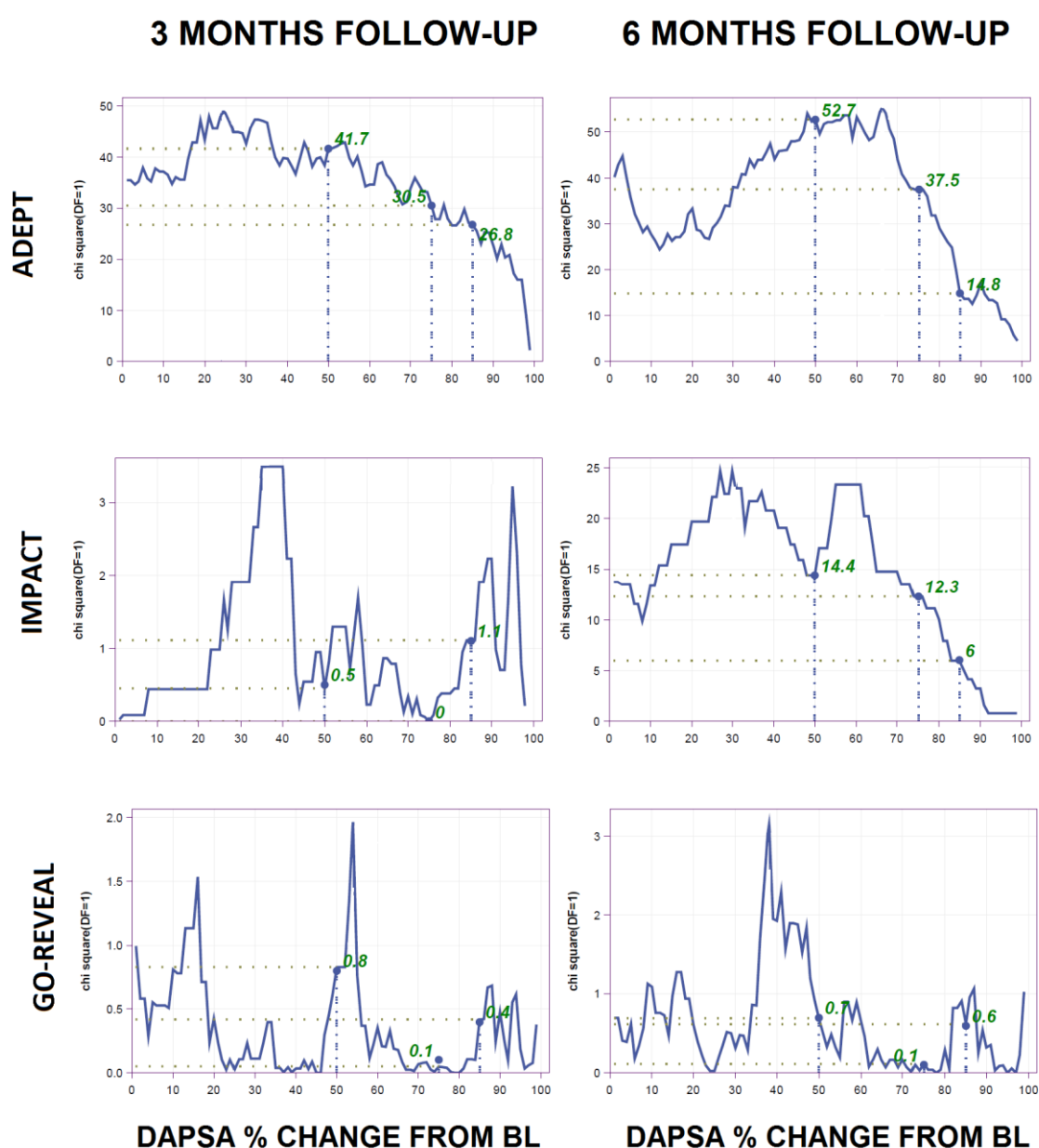


Figure S4. ROC analyses of DAPSA relative change in relation to the corresponding ACR-response definition. Area under the curve in receiver operating curves (ROC) analyses comparing DAPSA relative change after 6 months with ACR20 (left panel), ACR50 (middle panel), ACR70 (right panel). X-axis shows the rate of false positives (=1-specificity), y-axis shows true positive rate (sensitivity).

Figure S4.

